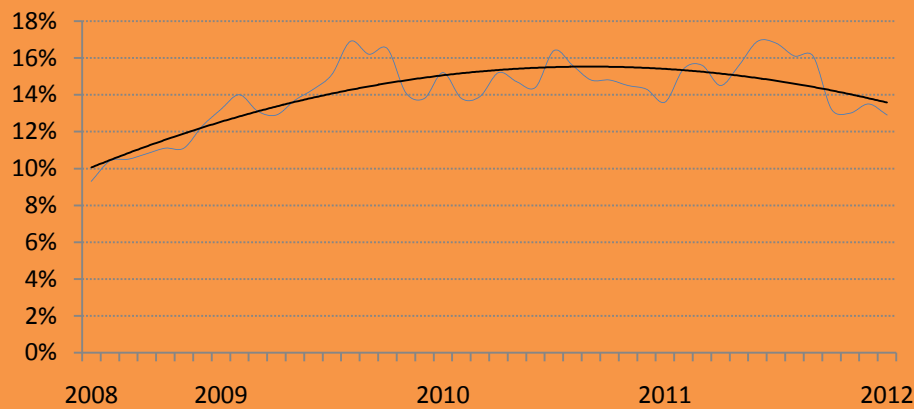


February Disability Employment Report

The unemployment rate fell in January for people with a disability to **12.9%**, the lowest it has been since April 2009! The general unemployment rate also fell to 8.3%.

Unemployment Rate for People with a Disability: 2009 - Present



The difference in unemployment rates can help be explained by how many people are joining the workforce and how many jobs are being created for them. In 2010 about **9 jobs were created for every 10 people with disabilities** who entered the workforce; so the unemployment rate is pretty close to the levels at the beginning of the year. During this same time, over **48 jobs were available for every 10 new job seeker with no disabilities** who entered the workforce; removing an additional 2.3 million job seekers from the pool.

You are **3.5 times** less likely to have a job if you have a disability: 18% of people with a disability have a job, while 64% of people with no disability have a job.

As of December, **79%** of people with disabilities are not counted in the workforce while only 31% of people with no disability were not in the workforce.

National Disability Information

The substance Abuse and Mental Health Service Administration recently released a report saying that in 2010

- an estimated 45.9 million adults aged 18 or older in the United States with any mental illness

December 3rd is the **International Day of Persons with Disabilities** and 2011 also marks the 30th anniversary of the International Year of Persons with Disabilities. It is sponsored by the United Nations Secretariat for the Convention on the Rights of Persons with Disabilities. The theme for this year's Day was "Together for a better world for all: Including persons with disabilities in development."

December 5-9 is AOTA's **Older Driver Safety Awareness Week**. It is a chance for families of older drivers to start conversations about important topics related to driving and older Americans, such as driving safety. **Abilities, Inc.'s Mature Driver Assessment** provides a comprehensive driving assessment and, when necessary, remedial driver training for the mature driver. Our goal is to prolong driving as long as possible and assist with alternatives for transportation when needed. Our fully adapted vehicles are available to meet most driving needs.

December 1st is the commemoration of **World AIDS Day**. A report from the UN said that that annual new infections fell by 21% since 1997. Also, **2.2 million lives have been saved** in low and middle income countries due to anti-viral therapies.

Family care giving has a tremendous impact on this country's healthcare system. According to a National Family Caregivers Association & Family Caregiver Alliance 2006 study, New York State has almost **2 million** family caregivers, providing **2 billion** hours of care for their disabled family members, that provides **\$20 billion** of economic value.

According to a report by the Alzheimer's Association 1 in 8 people 65 or older has Alzheimer's disease. That's **5.2 million** Americans.

People with diabetes are at significantly higher risk of developing all types of dementia, including Alzheimer's disease according to a study published by the American Academy of Neurology. This study bolsters previous research connecting the two illnesses.

According to the 2011 National Diabetes Fact Sheet **25.8 million** Americans have diabetes. In 2007 the estimated total cost of diabetes in the U.S. was **\$218 billion**.

According to the U.S. Census Bureau in 2010 an estimated 11.9% of Americans reported having a disability. That's over **36 Million** Americans!

- **2.8 million Children** ages 5-17 with disabilities.
- **19 million Adults** ages 18-65 have disabilities.
- **Over 14 million Adults over 65 years old.** That's 37% of the population over 65

Each month the White House hosts a disability conference call **open to the public**. These calls are hosted by high level government officials and have featured discussions on accessibility, employment, education, technology, emergency preparedness, transportation, healthcare and the budget.

13.3 million Americans 16- to 64-year-old reported difficulty finding a job or remaining employed because of a health condition.

Approximately **10 million** Americans receive Social Security Disability Insurance and/or Social Security Income benefits.

The majority of workers with disabilities do not need accommodations to perform their jobs, and for those who do, the cost is usually minimal. According to the U.S. Department of Labor, **two-thirds of accommodations cost less than \$500**, with many costing nothing at all. Moreover, tax incentives are available to help employers cover the costs of accommodations, as well as modifications required to make their businesses accessible to persons with disabilities.

Increased participation in the community is an important outcome for Abilities, Inc. consumers. According to the 2010 NOD/Harris poll:

- 79% of people with disabilities socialize with friend or neighbors at least twice a month, 10% lower than people without disabilities.
- 48% of people with disabilities go to a restaurant at least twice a month, while 75% of people without disabilities reported going out to restaurants at least twice a month.
- For the first time since being counted, people with disabilities were just as likely as people without disabilities to vote in the 2008 election!

In July, Verizon agreed to pay the largest ADA settlement in EEOC history for failing to provide reasonable accommodations for people with disabilities, such as making an exception to its attendance plans for individuals whose absences were caused by their disabilities.

Employment has a relationship with general life satisfaction. According to the 2010 NOD/Harris poll among people with disabilities who are working, 43% are very satisfied with life in general; in comparison to 33% of their non-working counterparts.

Abilities, Inc.

The **Research and Evaluation Center** at Abilities! has a long history of independent and objective evaluation, checking up on alumni and seeing how they are doing in such areas as; employment status, job satisfaction, community involvement, and goal achievement.

Responses to the Research and Evaluation outcome survey are used to identify ways to improve programs to best meet the needs of our consumers, so if you get a survey, please respond.

The **Kornreich Technology Center** can be a useful resource in achieving your goals. According to a 2006 survey, 93% of respondents indicated that the Assistive Technology evaluation was effective toward meeting their goals.

Abilities Inc.'s **Training programs** are for people with disabilities who have never worked or will require a full change of career direction. A 2009 Abilities, Inc. Graduate Outcome survey found that of respondents:

- 82% said that they were prepared/very prepared for employment upon program completion.
- 70% were currently employed full-time, part-time, or were enrolled in school.
- 86% said that their job enhanced their quality of life.
- And 82% were satisfied or very satisfied with their job.

Abilities, Inc. programs can have broad impacts on the lives of our consumers. A 2009 Abilities, Inc. Graduate Outcome survey found that of respondents:

- 93% said that they were satisfied with life in general.
- 76% said that Abilities inc. helped them develop social and interpersonal skills.
- 82% said that the program had a positive impact on their lives.

Communication is Key! 80% of respondents to the 2009 Abilities, Inc. Graduate Outcome survey said that Abilities, inc. helped them develop effective communication skills.

In a 2010 NOD/Harris survey 34% of people with disability reported inadequate access to transportation.

- Our **Adapted Driver Education** program is one of few in the state and has trained hundreds of individuals with disabilities to drive in the past few years.
- 85% of Adapted Driver Education 2011 survey respondents passed their road test.

6% of disabled workers 16 and older used public transportation to commute to work. In addition, 69% of people with a disability drove alone, 13% carpooled, 4% walked and 3% used a taxicab, motorcycle, bicycle, or other means according to the US Census Bureau.

Driving can lead to Independence and Employment: Of the respondents to the 2009 **Adapted Driver's Education** program:

- 57% said that program helped them to gain employment.
- 87% said that the program helped them to be more independent.

Abilities Inc. **Placement services** assist you in exploring job opportunities in many industries. Based on responses to our 2009 alumni survey:

- 94% said that their job enhances their quality of life.
- 76% were employed either full or part time.
- 69% said that upon completing their program they felt well or very well prepared for employment.
- 82% were satisfied with their job.

“Increased opportunities” means more than getting a good job. 59% of respondents to our 2009 **Placement Services** outcomes survey had already been either given a raise or promoted in their current job.

Long Term Outcome Evaluation of the **Learn and Earn** program in 2009 found that 75% of respondents were currently attending school and 42% of respondents were currently employed.